



Bachelor of Arts (Honours)
in Landscape Architecture
園境建築(榮譽)文學士

YEAR 1

ENTRY
SSSDP JUPAS CATALOGUE NO. JSSV03

YEAR 3

ENTRY
SELF-FINANCED DS125104

PROGRAMME HIGHLIGHTS

- Unique integration of spatial design and knowledge of natural systems to deal with the development of our built environment
- Studio-based curriculum addressing the social, environmental, and cultural factors in landscape planning and design
- In line with global trends and government policy in enhancing the public and recreational spaces of the urban fabric

Programme Overview

The programme aims to equip students with both technical skills and professional knowledge in a studio-based curriculum, which addresses landscape planning, design, management, and conservation. It is designed to provide professional insight into the industry by integrating expertise in spatial design and knowledge of natural systems. The curriculum will emphasise on developing students' intellectual skills and practical applications including sustainable and ecological design, knowledge on planting and construction, and latest digital technology in computer softwares in the areas of graphics, visualisation, GIS, and BIM that match the industry's requirements best.

Career Outcome

Graduates will have a range of job opportunities from design-oriented to technical or horticultural-related roles. They can join landscape architectural practices or multi-disciplinary consultancies as a landscape designer or assistant project manager, project staff or designer in contracting organisations, or as technical staff in government contracts.

Professional Recognition

Graduates may articulate to local or overseas accredited master/professional degree programmes. Suitable graduates can receive a scholarship to articulate to the Master of Landscape Architecture programme offered by the University of Gloucestershire of the UK, which is recognised by the Landscape Institute of the UK and the International Federation of Landscape Architects (and consequently the HKILA).

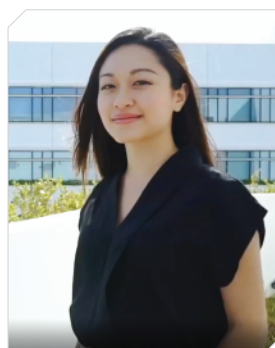


Graduate Endorsement

"Our programme leader and tutors at THEi BA (Hons) in Landscape Architecture are all very supportive, helping us to step into the discipline with practical courses and a wide range of internship opportunities in both public and private sectors. With their encouragement, I have completed a Master's degree in the UK, and am now working with advanced practitioners in a UK-based landscape firm. My horizons have been extraordinarily broadened to a level that I never expected."

CHAN Suen, Melody

2016 Graduate



Graduate Endorsement

THEi's Landscape Architecture programme has a good balance in professional and technical knowledge, which assists us to be a Work-Ready graduate.

CHENG Tsz Ching, Crystal

2019 graduate

PROGRAMME STRUCTURE

YEAR 1

- Chinese 1
- English for Academic Studies 1
- General Education Elective Module 1
- Studio: Spatial Exploration
- Studio: Site & Function
- Technology: Ecology & Plants
- Technology: Site Engineering
- Creativity & Innovation in Society
- Visualisation: Space & Graphics

YEAR 2

- General Education Elective Module 2
- General Education Elective Module 3
- Technology, Society & Work
- Entrepreneurial Mindset
- Studio: Landscapes in Urban Contexts
- Studio: Parks Design
- Technology: Horticultural Practice in Construction
- Technology: Materials & Construction
- Visualisation: Design Fundamentals

YEAR 3

- Chinese 2
- English for Academic Studies 2
- English for Professional Purposes
- General Education Elective Module 4
- Studio: Sustainable Landscape Design
- Studio: Urban Regeneration
- Theory: Research & Design
- Theory: Western Landscape Architecture
- Visualisation: GIS & Land Analysis
- Work-integrated Learning

YEAR 4

- Graduation Project 1: Project Proposal
- Graduation Project 2: Project Report
- Practice: Law & Management
- Programme Elective Module 1
- Programme Elective Module 2
- Programme Elective Module 3
- Practice: Professionalism & Development
- Technology: Details & Design
- Theory: Eastern Landscape Architecture

PROGRAMME ELECTIVES*

- Advanced Technology in Landscape Design (BIM)
- Case Studies in Contemporary Landscape Architecture
- Cultural Landscape Conservation
- Environmental Psychology
- Habitat Creation
- Art in the Landscape
- Sustainability in the Built Environment
- Environmentalism & Sustainable City
- Urban Planning & Design